

CONTACTS

100+ CLUB	01984 618437
CAREW ARMS	01984 618631
CAREW RANGERS FOOTBALL	01984 618281
CHURCH FLOWERS	01984 618654
CHURCH HOUSE BOOKINGS	01984 618717
CHURCH SECRETARY	01984 618715
CONSERVATIVES - WEST QUANTOCKS BRANCH	01984 618752
CROWCOMBE BABY & TODDLER GROUP	01984 618350
	katyemmadavis@googlemail.com
CROWCOMBE BELLRINGERS	01984 618715
CROWCOMBE BOOK CLUB	01984 618287
CROWCOWCOMBE CRICKET CLUB	01984 656496
CROWCOMBE CARS	01984 618263
CROWCOMBE KARATE CLUB	07914 411980
	Mizuchiwadokai@gmail.com
CROWCOMBE & STOGUMBER PRIMARY SCHOOLS	01984 618273
office@crowcombe.somerset.sch.uk / crowcombeandstogumberprimaryschools.co.uk	
CROWCOMBE HALL	01984 618254
CROWCOMBE PLAYERS	01984 618624
CROWCOMBE PRESCHOOL crowcombepre-school@hotmail.co.uk	01984 656139
DISTRICT COUNCILLOR;— ANTHONY TROLLOPE-BELLEW	07977 591940
	ATrollope-Bellew@westsomerset.gov.uk
FILM NIGHTS	01984 667202
FLOWER SHOW	01984 618249
MAGAZINE EDITORS	01984 618717
NEIGHBOURHOOD WATCH: VILLAGE HALL END	01984 618333
NEIGHBOURHOOD WATCH: MIDDLE	01984 618380
NEIGHBOURHOOD WATCH: SCHOOL END	01984 618738
NEIGHBOURHOOD WATCH—CROWCOMBE HEATHFIELD	01984 618215
PARISH COUNCIL CLERK	01823 400801
POST OFFICE	01984 618471
RECTOR	01984 656585
	rev_val@yahoo.co.uk
SCOTTISH COUNTRY DANCING	01984 618654
SHORT MAT BOWLS	01984 618444
SOUP KITCHEN	01984 618289
TENNIS CLUB	01984 618727/01984 618738
VILLAGE SHOP	01984 618452
WI	01984 618287
WOODLAND PLAY CENTRE	07775941353
	info@woodlandplaycentre.com / www.woodlandplaycentre.com
YOGA	01984 618237
	beccyjh@yahoo.co.uk

Carew Crowcombe Village Magazine

JUNE 2014—JULY 2014



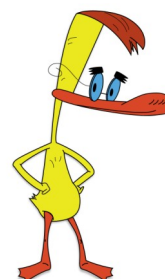
What a wonderful feeling it was to have a couple of good weeks of sunshine at the start of the month of May, although the rain has come down for a couple of days it will save the watering of the garden. What a sight the woods have been over during April and May with the mass of bluebells carpeting the floor more than we have seen for many years. Now we can look forward to the summer flowers with verdant growth all around, all looks well in the gardens although the slugs and snails are also in abundance.

This is a full issue with extra pages so much for all to read and catch up with and see some of what is going to happen in the next few months of the year as we look forward to the summer and holidays. The Midsummer Garden Opera at Crowcombe Court in June, the Traditional Beer Festival at The Carew at the end of July, the Annual Flower Festival at the end of August as well as lots for the children at the Woodland Play Centre much for all to enjoy.

We have a report as usual from the Parish Council but unfortunately ATB is still unwell so no Somerset Council report we wish him well and a speedy return to good health.

Enjoy your village magazine.

Ed. MI



Please email any contributions to
www.maggie.lnglis@btinternet.com: phone 01984 618717 or
drop it in the letter box at Buttercross,
(opposite The Carew Arms)

Use this magazine for advertising your services and goods

Contact me by email or phone, reasonable rates

*I am happy to include one off adverts, but a contribution to the
printing costs would be welcome.*

AUG/SEPT 2014 MAGAZINE DATE 16TH JULY

Errors and omissions accepted by Editor



CHURCH OF THE HOLY GHOST CROWCOMBE

June 2014

Sun 1st	11.00am	Family Service
Wed 4th	10.30am	Holy Communion
Sun 8th	10.30am	Pentecost CW Benefice Communion at Nettlecombe
Sun 15th	8.30am	BCP Communion
Sun 22nd	6.00pm	BCP Evening Prayer
Sun 27th	10.30am	CW Benefice Communion at Sampford Brett


May 2014

Wed 2nd	10.30am	Midweek Holy Communion
Sun 6th	11.00am	Family Service
Sun 13th	10.30am	CW Benefice Communion at Stogumber
Sun 20th	8.30am	BCP Communion
Sun 27th	6.00pm	BCP Evening Prayer

Please note that should anyone require transport to any of the Benefice Communion Services, please do make contact with the Revd Jon Rose on 01984 618715 for arrangements.

BCP = Book of Common Prayer – traditional worship

CW = Common Worship – more contemporary worship



**Home Leigh House
Crowcombe
Somerset
TA4 4BL**

**Bed & Breakfast
En-suite Accommodation**

Price from £28.00 pppn

**Mrs Kim Hughes
Tel: 01984 618439**

HOUSE SITTING

DO YOU NEED A HOUSESITTER ?

Long or short term

Experienced with all animals large or small

References available on request

Nancie Finney

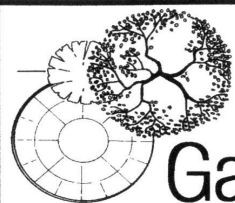
Mob: **07854090923**

Email: nanciefinney@hotmail.co.uk

WEBSITES

Bed & Breakfast

www.tythe-barn.co.uk
www.puddiesmeadow.co.uk



Chris Hayes BA (hons) Garden Design

A Professional garden design service
Landscaping & garden restoration
Garden consultancy service available

www.gardendesignsomerset.com

Tel 01984 618425 (Evenings)

Philip Ash Decorators

*Interior & Exterior
Decorating*

all types of wall & floor tiling

Home. 01984 - 656669

Mob. 0777 180 2389

WI NEWS

For our April meeting Yvette Staelens, a leader of the local Community Choir, came along to put us through our paces. The title of her talk was 'Anyone can sing'. Aha! thought we, 'she hasn't heard us yet'. Well we need not have worried'. Yvette is the Leader of a local Community Choir, the most famous of whom is Gareth Malone of television fame, and knows her stuff. She has a wonderful way of teaching, completely acoustically, with no music whatsoever, simply by leading us with her voice, together with hand movements to indicate when we were up and when we were down and when (like the Grand Old Duke of York) we were neither up nor down! Following her lead we all seemed to get it right and were, justifiably, no end pleased with ourselves! Thank you Yvette. We all had a jolly good time.

N.B. If anyone is interested Yvette gives classes at Halsway Manor (Mondays at 10.00) and Broomfield Village Hall (Thursdays from 5.00 – 6.30). All are welcome, and I rather gather, the more the merrier.

Our May Meeting was our AGM. Unfortunately I was not able to be present nor was Sue Billinge, due to a sudden onset of shingles. Jan Harbour stood in for her as Secretary and we were able to get a quorum so the meeting went ahead as planned. There were about thirteen present including one new member, Pat from Lawford, so a big welcome to her. Our Resolution regarding organ donation, was calling on every W.I. member to make their wishes known to family members. It was carried unanimously. We ended the meeting with a short quiz devised by Sue Billinge. We do send her every good wish for a speedy recovery. GET WELL SOON SUE.

We are always looking for new members so if you are thinking about it DO contact one of us and come along as our guest to give us a look over. We should be so pleased to see you.

Dates for your Diaries

June 11, 7.30 Crowcombe Church House **'Head to Toe in Reverse'** Talk and Demonstration by Jill Venn. This should be entertaining as I understand it involves modeling Hats. Visitors welcome.

June 19, 12.30 Crowcombe Church House. **'Soup Kitchen'** All welcome. No charge but donations given to a chosen charity



W.I. Table Top Sale

Crowcombe W.I. are holding a Table Top Sale
on Saturday, June 28, from 2.00 -4.00 pm, in
The Rectory Courtyard. (opposite the Church House)

BOOK YOUR TABLE NOW!

£5.00 per Table

All profits your own!!

Teas, Coffees with Cake available

At the Church House

Details – Ring Trish Kennedy 01984 618212

P.H.W



NATIONAL GARDEN SCHEME FESTIVAL WEEKEND

Vellacott Lawford is open from 1.00 to 5.00pm on Saturday 7th and 8th June.

Admission £3.00—children free

Homemade teas and plants for sale.

The N.G.S. which last year raised over £2 million pounds supports several charities including Macmillan Cancer Support, Marie Curie Cancer Care and Help the Hospices—see the 'Yellow Book' for the full list. Copies can be found in the village shop.

Contact email kevinchit@hotmail.co.uk

Events at Hartwood House

26th June Evening Open garden in aid of NGS. 4 to 7.30 p.m. Surplus on teas and plants to SSAFA

26th July Taunton Thespians Taming of the Shrew 7.30 If very wet
Crowcombe hall

27th July Garden Open in aid of NGS 2 to 5.30 p.m. Surplus on teas and plants to Cothelstone Church

David Freemantle ; email hartwoodhouse@hotmail.com or 667202

West Somerset Advice Bureau



Free confidential advice on:

◆ Welfare benefits ◆ Debt

◆ Housing problems ◆ Employment

◆ Consumer issues

◆ Divorce and family matters

Contact West Somerset Advice Bureau

The Lane Centre, Market House Lane, Minehead TA24 5NW

Tel: 01643 704624

Email: enquiries@westsomersetadvice.org.uk

www.westsomersetadvice.org.uk

Opening hours on: Monday, Tuesday, Thursday and Friday 10am - 3pm

Wednesday 10am - 1pm (closed first Wednesday of the month)

Telephone Advice Service: same as opening hours above.

Also at:

Watchet Surgery, Thursday 10am –12noon

Williton Doctors Surgery Wednesday 10am - 12noon

Exmoor Medical Centre, Dulverton Tuesday 10am-12noon





National Centre
for the Folk Arts

Enjoy – Explore – Learn

Courses and classes
in traditional music,
dance, song, storytelling,
arts and crafts –
day visitors welcome!

Regular gigs and dances

Music sessions in the bar

Art classes

Morris and folk dance clubs

Craft Fairs

Groups and schools are welcome to
visit the historic Manor and gardens

Facilities available to hire for
conferences, meetings, family events.

B&B, great food, parking, bar, and direct
access to the Quantock Hills.

All this on your doorstep!

Halsway Manor, Nr Crowcombe, TA4 4BD

01984 618274

office@halswaymanor.org.uk

www.halswaymanor.org.uk



CROWCOMBE
COURT



Midsummer Garden Opera at Crow- combe Court

Opera Brava have been bringing professional opera to historic houses and outdoor venues for over 25 years. On the 20th and 21st of June they return to West Somerset with touring productions of Tosca and Rigoletto. The gates open at 18.00 to allow opera goers to picnic in the grounds and the performance commences at 19.30. There will be a 25 minute interval and the performance will end at approximately 22.30.

A licensed bar and hot drinks are available.

Disabled access is good.

Tickets are priced at £25 for adults and £10 for children aged 5 to 16. The performances are not suitable for children under 5.

To order tickets please visit our website at

www.crowcombecourt.co.uk

or ring us on 01984 618752

chesterton
SINCE 1805
humberts



Jackson-Stops
& Staff

CROWCOMBE PARISH COUNCIL – DIGEST

The Parish Council met on 15th May 2014.

Election of Chairman: Jane Chipp was nominated and unanimously voted by the Councillors to continue as Chair which she duly accepted.

Police Report: March to May 2014.

PCSO Peter Bolton reported the Police had received 18 calls over this period of time, relating to lamping, domestic issues, traffic issues and general calls. Please report any suspicious vehicles within the parish to the Police. Otherwise the whole beat area was fairly quiet.

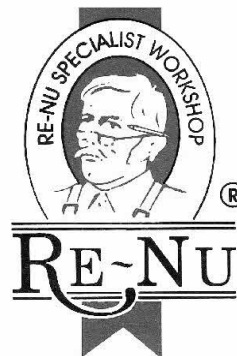
County Councillor's Report: Christine Lawrence reported that she had liaised with SCC Highways regarding the pot holes and drains needing attention. Normal road repairs would take about 18 months to catch up due to the severe weather we had over the winter months.

District Councillor's Report: Anthony Trollope-Bellow attended the meeting briefly to say the Joint Officer Team between WSC and TDBC was working well. This joint team were hoping to make savings, provide services on time and appear seamless across the two Councils. WSC were to keep £500m in their reserves which may mean an increase in the Budget next year.

Finances: Year End Accounts were presented and approved. Current a/c £8,218.90, Deposit a/c £3,220.52, Amenities a/c £2,680.68. Unpresented cheques totalled £695. Balance for year £13,425.10. No issues had been raised after the Internal Audit and the Annual Return would be sent to Grant Thornton on time at the end of June.

Play Area Update – The play area is nearly completed. All the new equipment has been installed. Just a few drainage and landscaping works still to be done. It is hoped these will be finalized over the next few weeks. The Friends welcome any volunteers on 7th & 8th June weekend to help out with these tasks. Once the Post Installation inspection has taken place the new play area should be open.

WANT A NEW KITCHEN?



RE-NU make doors and drawer-fronts **any size**, which we fit onto your existing kitchen cupboards and bedroom wardrobes.

We also fit new worktops, extra cupboards, sinks and appliances.

Complete kitchens also supplied and fitted

LESS TIME, DISTURBANCE AND COST

Telephone: Jem Foster on 01823 401332
www.jem@re-nukitchens.co.uk

Looking for Electrical Services?



We undertake Domestic, Commercial & Industrial Works

- New Builds • Rewires • Renovations
- Inspection & Testing • PAT Testing

No job too big or small



**Call: 01884 242425 -
07985194648 - 07970557673**
www.dndelectrical.co.uk



Working
with



Putting people in touch with their communities

"IF ONLY I HAD KNOWN THAT BEFORE!"

Here are two recent examples of how we have helped local people-

Margaret was caring for her 94 year old mother, who although still fairly active was not getting out very much. They both needed a break from each other. We provided details of the two nearest Active Living Centres which provided a range of activities which matched Margaret's mother's interests and also provided lunches. Margaret's mother now regularly attends one of the centres each week and has built up a new social circle and Margaret has a day where she can follow her own interests.

Jaqui's 17 year old daughter is recovering from anorexia but is feeling very isolated. She is interested in finding out more about volunteering to help her daughter's recovery and to alleviate her loneliness. We were able to put her in touch with the Somerset Volunteer network and the Somerset Rural Youth Project.

If you or some-one you know wants information, then we are here to help you.

Just give us a ring on 01643 707123

or call in to see us at Engage West Somerset, Alcombe Village Hall, Marshfield Road, Alcombe, Minehead, TA24 6AQ, or email us on information@engagews.org.uk
We are open 9.30 am to 2.30 pm on Tuesdays, Wednesdays, Thursdays, and Fridays; and 10.00 am to 2.00 pm on Saturdays.

Reg Charity No -1123668 www.engagews.org.uk

Then we are here to help you -

Just give us a ring on 01643 707123

or call in to see us at Engage West Somerset, Alcombe Village Hall, Marshfield Road, Alcombe, Minehead, TA24 6AQ, or email us on information@engagews.org.uk
We are open 9.30 am to 2.30 pm on Tuesdays, Wednesdays, Thursdays, and Fridays; and 10.00 am to 2.00 pm on Saturdays.

Reg Charity No -1123668 www.engagews.org.uk

Annual Parish Assembly – this was held on Sunday 18th May following the Thanksgiving Service. The Parish Council and the local groups and organisations within Crowcombe provided short reports on how their year had gone. Both the church service, refreshments supplied and assembly attendance was very successful and enjoyed by many villagers.

The next Parish Council meeting will be held on Thursday, 3rd July 2014 at Church House.

Crowcombe Parish Thanksgiving and Celebration Service on Sunday 18 May 2014

Thank you so much to all who contributed to making the morning service in Church and the considerable gathering afterwards in Church House such a happy occasion. It was especially nice to have three of the Crowcombe Primary School children present reading to us about their school - past and present. A good number remained beyond the gathering to attend the Crowcombe Parish Council Annual Assembly where we heard about our many successful village activities taking place in our midst. A full morning was completed by 1.00pm on the striking of the Church clock just in time for hearty lunches.....

Revd Jon Rose, Assistant Curate, Crowcombe Church

SUPERFAST BROADBAND EXPRESSION OF INTEREST

For those of you who are frustrated with their slow response time with broadband we have had another plea from Bob Druitt as follows:-
According to Bob a fibre optic box has been delivered to the local exchange, but BT will let it sit there until there is a sufficiently wide expression of interest to justify rolling out beyond the school and the shop, which apparently already have superfast broadband. Most of us have submitted these forms several times over the past couple of years, but it would seem to be in our interests to do so again, so spread the word! Only takes a minute.

Please go on line and complete to end the frustration.

<http://www.superfast-openreach.co.uk/expression-gen.aspx>



Delicious frozen meals delivered to your door. Minimum order of £20 and no delivery charge if you live in Crowcombe Parish, just call 01823 323001

... or visit Astrid and Chris in their shop on Corporation street in Taunton

BESPOKE PICTURE FRAMERS

‘QUANTOCK **FRAMEWORKS**’

LARGE SELECTION OF MOULDINGS AND MOUNTS.
SITUATED 100YDS FROM THE A358 IN CROWCOMBE
WITH FREE PARKING !

OPEN TUESDAY-FRIDAY 10am—2.45pm
ASHFIELD FARM , CROWCOMBE, TAUNTON TA4 4AW
Lawsturgess@gmail.com 07825489798

Cards taken

PLANT SALES BY FLAXPOOL NURSERIES

Saturday April 5th and April 19th
Saturday May 3rd, 17th and 31st
and June 7th

In the Quantock Room
Crowcombe Village Hall
9.30am—11.30am

Shrubs, Perennials, Trees, Alpines

Basket, Bedding and Vegetable Plants

Enquiries Julia & Ian Woollard 01984 618396

Terry James

Bathroom, Wetroom & Kitchen Installations

No-Obligation Quotes

Bespoke Design & Installation

Supply & Fit or Fit Only Service

Call Terry on

07905 467778

www.terry-james.co.uk





Classes for YOU on Mondays @ The Crowcombe Hall

My First Dance Club 1.45pm – 2.15pm

A joyful first experience of dance for pre-school girls and boys exploring ways of moving, through many dance genres and styles of music.

Stretch and Strengthen 2.15pm – 3pm.

A series of special stretching sequences working every part of your body from the face to the toes. Gentle but deep-reaching with delightful results. For adults of all ages and abilities. Combined with uplifting tunes and timed to accommodate the local school run. FIRST CLASS FREE ON 19th MAY – COME AND TRY IT!

Junior Ballet 4.15pm – 4.45pm

A fun ballet class introducing basic technique, presentation, musicality and dance vocabulary. For ages 4 - 8.

Junior Street Dance 4.45 – 5.15pm

Authentic foundation moves from Popping, Locking, Breaking, Hip-Hop and House. Encouraging use of rhythm, groove and self-expression. For ages 4 – 8.

rah@thecattells.co.uk - 07786 436 616 - dance more! on Face Book

A.I.S.T.D., A.D.P.A., A.I.D.T.A. Enhanced D.B.S., Full Equity, Public Liability Insurance

Live Life – dance more!

Ian D Lee CARPENTER

Local, experienced and reliable

All aspects of carpentry and general building

- Structural Timber Work Doors & Windows
- Locks latches and catches Kitchens and Bedrooms
- Solid Timber Flooring Property Refurbishment
- Cellar and Basement conversions City & Guilds qualified

Anything undertaken

Please call *Ian* for a free quote on

Home 01984 618795

Mobile 07984 671912

CROWCOMBE CINEMA AT CROWCOMBE VILLAGE HALL



Sunday 29th June The Railway Man (15).

A former British Army officer, who was tormented as a prisoner of war at a Japanese labour camp during World War II, discovers that the man responsible for much of his treatment is still alive and sets out to confront him.

Tickets £6 from Crowcombe Post Office or pre booked from hartwood-house@hotmail.com or 667202

Doors Open 7 p.m. Performance starts 7.30 p.m.
Bar Ice Cream



Summer Adventures

Summer Playschemes start on Thursday 24th July and we will be in the woods every week!

It is official...we are the **BEST** Playscheme in Somerset! So where else should your children be this summer holiday....with us in the woods having a wild and adventurous time!

Have you arranged childcare whilst you work and have you planned in some wild time for your children? We would love to share some adventures in the woods at this stunning time of year.

Join us for some den building, campfire cooking, bug hunting, surviving, playing endless games of capture the flag, foxes and hounds, weaving, making bows and arrows...and loads more!

Thursday 24th July
 Friday 25th July
 Thursday 31st July
 Tuesday 5th August
 Friday 22nd August
 Thursday 28th August



Times: 1000 - 1600hrs.

Early Bird from 0900 and **Night Owl** until 1700hrs - £5.00 each, per child, per day

Cost: £20 per child, per day. 10% discount for siblings

Ages: 8 years and over (occasionally under 8's please ask)

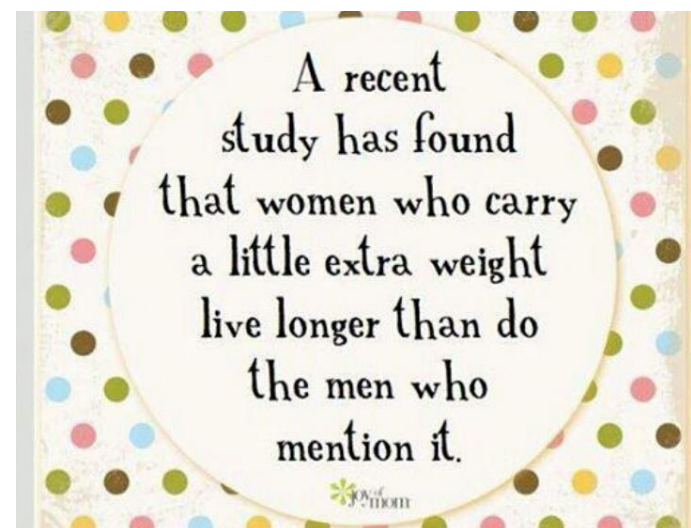
There are places around the campfire...so book your place now <http://www.woodlandplaycentre.co.uk/makeabooking.html>

Now, seven years later, we plan to tackle what is perhaps the more important task of **refurbishing the exterior**. Claire Fear of Thread in Wellington is our Architect. She is very familiar with the building, having been the Louise Crossman architect overseeing the building's 2007 internal refurbishment. A competitive tendering exercise has just been completed and we have appointed a contractor: Corbel Conservation Ltd.. We face a £65K all-in cost for refurbishment of all the external walls.

The best part of two years will now be needed to fund this crucial fabric preservation enterprise – principally by seeking grants from trusts and foundations as we did before. They like to see evidence of local community involvement in any venture for which their funding is sought. So we will be inviting everyone in the village to support a number of fund raising events taking place this year and next. We will probably begin with a Project Launch this autumn when we will explain what we are about. This could even take the form of a **Village Launch Party** if we can persuade a Sponsor to underwrite it.

Meantime every booking of the building by our local community - and non-villagers alike - contributes to the building's finances. The Gallery is a unique and intimate venue to celebrate your 40th/60th/80th birthday, wedding anniversaries and receptions of one kind or another. We can advise on caterers.

Peter Menneer.





CHURCH HOUSE, CROWCOMBE

Registered Charity No. 265554

Village Assembly Report – and a New Challenge

Grade 2* listed Church House is a charity. It is one of the two surviving church houses in Somerset. We - the village volunteers who run it - report to the Trustees at the Charity's AGM.

Over the year Church House is occupied nearly one day in two - by a mix of community events, meetings, clubs events, family celebrations and art exhibitions. Financially we usually break even. Last year that did not happen. We had to contend with water finding its way into a Gallery lintel. The outcome was a £750 deficit.

There was one upgrade to the building's facilities during the year. The inadequate radiators in the Meeting Room have been replaced – to good effect.

In September you will remember we celebrated the 500th birthday of Church House with a wonderfully well supported village Hog Roast.

When the present committee was appointed in 2004, we were aware that the exterior walls needed attention – especially the pointing of the rear of the building that faces south west and takes the weather. The storeroom wall remains chronically wet. There also appears to be a crack in the north west elevation that faces the Pound. All the guttering and down-pipes need stripping down and TLC treatment before replacement.

But back in 2004 a higher priority was to refurbish the interior of the building: installation of central heating, lighting in the both Gallery and downstairs, the servery, two WCs and floor tiling on the ground floor. This was completed in 2007 and cost £75K.

Wet and Wild Adventure Camp



Monday 11th to Friday 15th August 2014

As it is my birthday this month and I am feeling generous (because of the award!), I am going to offer the last few spaces at the **early bird** rate!

So don't miss out on the OFFER of the month. Book and pay your deposit for an amazingly generous discount for the Adventure Camp this Summer Holiday. Camp includes all costs; food, travel, accommodation and activities. Places are limited and **MUST** be booked in advance.

Only £199.00 pp (excluding sibling discount)

Dates for your diary

Sunday 6th July

10am – 12.30pm

Friday 8th August

11am – 3pm

September (date TBC)

Gruffalo Adventure & Picnic – for families.

Crowcombe Playday – fun for all the family.

Horse Logging - Kip & Sol will be in the woods again this Autumn, so if you wanted to come recently and couldn't. Keep your eyes peeled for dates in the Autumn when they will be working and teaching the art of extracting timber.

Tuesday 29th July

To Wednesday 7th August we are running a series of six days of drop in play sessions at French Weir Park, Taunton.

For all events please see the calendar for more details - <http://www.woodlandplaycentre.co.uk/calendar.html>

Do share all this exciting news with friends, colleagues and family. Lets swap some screen time for some green time this holiday!

Informal Evening With
Henry Olonga

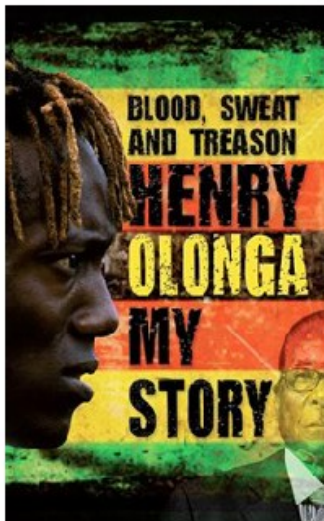
The Crowcombe Hall
7.30pm Friday 13th June
“Admission Free”

Book / Music Stall, & Donations
(further info: 01984 618336 / 618624)



My Story, Cricket, Music and Faith

First Black Cricketer to play for Zimbabwe
International Cricket, Protest, Mugabe, Treason, Exile
Music and Song - Wonderful Tenor Voice
More to Life than MCC Coaching Manual; There is the Bible
Opportunities for Questions and Answers



CROWCOMBE VILLAGE SHOP NEEDS

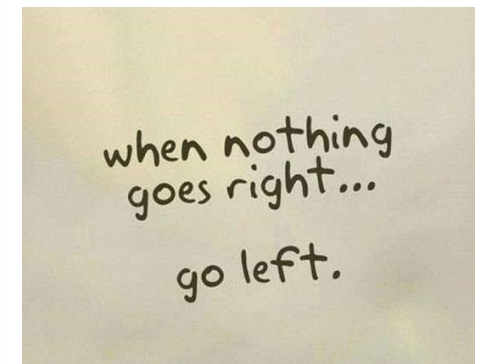
YOU!

Although we now have more volunteers helping in the shop than ever before, we are still looking for more!

The reason is that many volunteers find it much more convenient to volunteer once a fortnight rather than once a week. As well as requiring less of your time, it also has the advantage that you are sharing a time slot with someone else, and consequently can be much more flexible in planning your duty days. But of course it does require more people!

If you feel that you could help out in the shop in these more relaxed circumstances, please make this known to the volunteer in the shop, who will pass your name on to the committee.

We are also still looking for a shop chairman, someone to chair the monthly meetings and to take overall charge of the shop. At the moment we are managing without, but it would be so much better to have a focal point, someone to whom the team could relate and be responsible. If you feel you could fulfil this role, please contact a member of the committee.



**CROWCOMBE FLOWER SHOW
SUNDAY 31ST AUGUST 2014**

The flower show is fast approaching and the schedules will be delivered shortly. Can you please spare something for the flower show raffle that we can use to make up hampers, prizes with all donations gratefully received.

Please contact Julia Woollard 618396 or leave in the porch of 2 Priory Cottage. Thank you Julia.

History of Crowcombe Church Bells

At the Church Thanksgiving service I gave a potted history of the Church Bells, and I have been asked by several people to record it in CAW.

The history of the bells is astonishing. The 2nd and 3rd bells were cast in Cullumpton in 1771 – one year after Cook claimed Australia for the English Crown. The 4th is the oldest bell and was cast in Bristol in 1440, that was 118 years before Elizabeth 1st was crowned Queen.

The 5th was cast in Exeter in 1500, 3 years after John Cabot returned in triumph from an expedition to America. The 6th bell weighing the best part of a ton was cast in Wellington in 1712, 3 years after the creation of the United Kingdom, and the same year Wren completed St Pauls Cathedral.

How they finally arrived in Crowcombe is a mystery. Suffice to say they have rung for some of the most momentous events in the history of our Country, and with the help of present and future bands, long may they do so.

Today we have an enthusiastic band of ringers headed up by a very experienced Tower Captain, Revd Jon Rose. Practice night is still Thursdays – 7.30 for 7.45 !

New ringers are always welcome so come along and give it a try ! !



The Carew Arms
Crowcombe
TA4 4AL
(01984) 618631
www.thecarewarms.co.uk

A warm welcome awaits at The Carew Arms!

Try our fabulous new Summer Menu and enjoy our beautiful garden with views over open countryside

Date for your diary!
Our Traditional Annual Beer Festival
with live music – 25-27th July 2014

We are open every day from 12 noon,
with lunches served from 12-2.30pm

A full restaurant menu is available
each evening from 7pm

Fish and Chips served each Friday evening
from 6-7pm

Everyone welcome to our fun quiz night –
each Sunday from 8pm

Great real ales - fabulous food - traditional setting

We look forward to seeing you at your local pub!

Emma, Iain, Jamie and the team

Crowcombe Primary School ~ News

The children from Class One at Crowcombe School have been having an action packed year so far. They have been watching the new housing being built at Higil Lea and have visited the site on three separate occasions. The final visit was the official opening of Higil Lea and we are delighted that some of our families are now living there too.

We have been watching winter turn to spring and now to summer. We have enjoyed seasonal walks to look at the changes in our environment. We are also busy planting our gardens and the Gardening Club have been especially busy. We have been very grateful to parents who have contributed plants and soil. The children love our senses garden which helps them to appreciate our world and links in well with the RE curriculum.

Visitors have been into the school too. We were very pleased to share some of the old toys that husband and wife, Kevin and Pat Chittenden, brought into the school. They showed us a fantastic selection of old toys, some of which were 70 years old! We loved having our friends from Stogumber School Class One with us too, helping compare and contrast old and new toys with some real hands on experience.

Other local people are regular visitors. We are delighted that our volunteer helper, Linda Silverman, comes to help us in Class every Thursday afternoon. We also see Brian Hilkin and Sue Biggs each month when they attend to lead a special assembly. Vicar Val is a regular and popular visitor too and enjoys coming into our classes to see what we are doing and join in wherever possible.

We are looking forward to our summer trip and we will let you know where we went in the next edition

Mrs Maria Rose and Class One at Crowcombe Primary School



Crowcombe Pre-School

Just moved to the area with your family or know of anyone who has? Do you have a child coming up to 2 ½ and would love for your child to join a caring, supportive and community-centred pre-school.

Crowcombe Pre-School is a committee run charity which prides itself in engaging, nurturing and encouraging the development of every child who attends. Your child will have opportunities to explore their world and experience many areas of creative, social and practical learning to develop skills and knowledge in all the Early Years areas of learning.

Operating from Crowcombe Primary School hall four mornings per week, our children make the most of the school grounds set in beautiful surroundings and have parts of their sessions out on the field, in the forest school area and on the playground.

Contact us on crowcombepre-school@hotmail.co.uk for an information pack.