

# **CAW**

## **Crowcombe**

### **Village Magazine**

**OCTOBER 2017 — NOVEMBER 2017**



#### **GRU and HIS MINION CO-HORTS**

What great fun the scarecrow competition was. It seems to make everybody use their imagination to make us laugh. I am sure we now know who Gru and his minions are from the successful Despicable Me films. After such a summer with the weather proving inclement most of the time, it was lovely to have such good weather for the annual flower show day. With the house martins, swallows and swifts having departed to Africa, the evenings becoming colder and morning mists to starting to appear, I think when this happens autumn is here and then winter follows..



Please email any contributions to me:  
maggie.inglis@btinternet.com:  
phone 01984 631793

I The Almshouses, Woolston, TA4 4LN  
Please email or post items to me for insertion.

*I am happy to include one off adverts  
Small charge may be applied to cover costs.*



## **CROWCOMBE CHURCH SERVICES**

### **October 2017 and November 2017**

#### **October 2017**

Sun 1st	11.00am	Harvest Festival Service
Mon 2nd	10.30am	Weekday Communion Service
Sun 8th	10.30am	CW Benefice Communion at Nettlecombe
Sun 15th	8.00am	BCP Communion
Sun 22nd	6.00pm	BCP Evening Prayer
Sun 29th	8.00am	BCP Communion
Sun 29th	10.30am	Deanery Festival Communion at Cannington
Mon 30th	10.30am	Weekday Communion Service

#### **November 2017**

Sun 5th	10.30am	CW Benefice Communion at Monksilver
Sun 12th	8.00am	BCP Communion
Sun 12 <sup>th</sup>	10.50am	Remembrance Service
Sun 19 <sup>th</sup>	8.00am	BCP Communion
Sun 26 <sup>th</sup>	11.00am	BCP Morning Prayer

#### **December 2017**

Sun 3rd	11.00am	Family Service
---------	---------	----------------

**Please be assured of a most warm welcome if you attend any of our services.**

Should anyone require transport to any of the Benefice Communion services away from Crowcombe, please contact the Revd Jon Rose on 01984 618715 or Sue Jenkins on 01984 631995 to make an arrangement.

BCP = Book of Common Prayer – traditional worship

CW = Common Worship – more contemporary worship



## THE ROYAL BRITISH LEGION POPPY APPEAL 2017

The house to house collections this year will run from Saturday 28th October until Saturday 11th November.

The R.B.L's Festival of Remembrance will be held on Armistice Day with the Nation's Wreath Laying Ceremony taking place at the Cenotaph in Whitehall the following day.

As usual a short service of remembrance will be held at the village War Memorial on Armistice Day at 10.50a.m.

We should perhaps think specially this year of all those who, 100years ago were involved in the squalor and carnage at Passchendaele, 'Lest We Forget'

Pat and Kevin Chittenden  
Honorary Poppy Appeal Organisers.



Sadly Beryl is unable to write our report due to her recent mishap. She is now on the mend and we look forward to her return.

In August we made a trip to the newly refurbished Rural Life Museum at Glastonbury. It is well worth a visit and a good choice for a wet day.

In September we welcomed Clare Rawle of Tamlyn's Auction House at Bridgewater. She left school at 16 and worked her way through all aspects of the trade and now regularly appears on the B.B.C.'s Flog It, Bargain Hunt and Antiques Road Trip. These programmes give her the opportunity to visit many interesting places and in the case of the Road Trip drive 'serious motorcars'. They have a large following and yes do have only one hour to find three bargains - not a second more.

We enjoyed a lively and entertaining evening which concluded with Clare talking about the varied items members had brought along.

Our October meeting is on October 11th when we have a talk on the Exmoor Pony Society.

We are always happy to welcome guests - your first visit is free !  
Pat Chittenden

## Quantock Abbey Wine Cellars

Estd 1991

Invites you to

### A Christmas Wine Tasting

The Church House, Crowcombe

Saturday 2nd December 10.30am - 4.00pm

Sunday 3rd December 12.00pm - 3.00pm

Quantock Abbey Wine Cellars  
Mill Farm  
Weston Bampfylde  
Yeovil BA22 7HY

Phone: 01984 618268  
Mobile 07967 470602  
Email: [sales@quantockabbey.co.uk](mailto:sales@quantockabbey.co.uk)





### **Crowcombe WI Christmas Pudding Mix**

The mix is made to an old traditional recipe using natural products, vegetarian suet, no added colouring but does contain nuts.

Just collect and boil. No shopping for all those ingredients!

**£2.75 per pound weight**

Orders to be collected from **Puddies Meadow** on **Friday 17<sup>th</sup> November** between 3.00 & 6.00pm. Delivery can be arranged.

**Please place your order by Monday 13<sup>th</sup> November**

To order what you require telephone or email Trish Kennedy 01984 618212 [trishkennedy03@hotmail.com](mailto:trishkennedy03@hotmail.com)

## **Hartwood House Garden Openings**

A quick note to thank everybody who supported our Garden Openings this year both as helpers or visitors. We were able to raise over £3000 for The Red Cross, National Gardens Scheme, SSAFA and Medicinsans Frontiers. We are very grateful for your support.

Our garden opening plans for next year are not finalised but we do hope to open on Easter Monday April 2nd for the Third MRI Scanner for Musgrove. Being early in the year the format will be slightly different. We will open from 11 to 3 and hot soup and rolls will be served as well as tea and cakes.

Best wishes

David and Rosemary



# 2017 Flower Show

A massive thank you to everyone that took part in this year's Flower Show and an equally big thank you to those that helped out on the day. After a month of grey skies, wind and rain, we were blessed with one of the best days of the Summer.

It was hardly surprising that entries were slightly down on last year. In fact it's a credit to those that took part that you found anything in your gardens. The Dog Show was just as popular as last year and is very much a permanent fixture.

The Village School contributed to the Children's Classes and it was wonderful to see so many entries from them.

We had a new division this year – the Scarecrow Competition – and we hope you enjoyed seeing these around the village and will want to submit your own creations next year.

The Show's finances are in a very healthy position and so we have donated £50 to the Bell Ringers, £100 to the Church and will be spending £150 on planting around the village for all to enjoy.

Once again, thank you very much, and we look forward making next year's show even bigger and better.

The Flower Show Team

## **FOR THOSE WHO WISH TO KEEP THE UNIQUENESS OF THE SURROUNDING COUNTRYSIDE AND BUILDINGS AROUND US.**

An application has been made to demolish Leigh Mill Cottage, just below the bridge over the railway line and the only cottage on the quiet rural Leigh Lane. It is a charming traditional old cottage which blends well with its surroundings and is due to be replaced by a modern dwelling, unless sufficient objections are received by post at the Planning Office, The Deane House, Belvedere Road, Taunton TA1 1HE by October 4th 2017.

**PLEASE MAKE ANY OBJECTIONS KNOWN IN TIME**

## **Report from West Somerset Council by Anthony Trollope-Bellew.**

Forming the New Council : since my last report to you the leader of Taunton Deane Borough Council, John Williams, and I had a meeting with the Secretary of State for Communities and Local Government, Sajid Javid. We were very politely received and the Secretary of State asked a number questions and then listened to our replies attentively then followed up our answers. This meeting was solely about formation of the new council from Taunton Deane and West Somerset. The submission has been accepted and complimented but the decision has run into a political problem. The loss of the government's majority in the June election and the importance and complexity of the Brexit Bill has meant that there are problems getting it through the House of Commons. If we do not receive the 'minded to' decision fairly soon it will cause problems. The transformation process in its present form, which is designed to make savings and increase efficiency, cannot progress unless we can be sure that the new council will be formed. This will have an effect on the amount of savings we have to make next year.

We at West Somerset Council have done everything the government asked us to do and now the future is no longer under our control. As I have stated before the last thing I wanted to happen was West Somerset Council to disappear but the hard realities of the reducing level of government funding to local government has meant that there is no other viable option that will continue to provide the services to you that you deserve. The rurality of West Somerset has meant that we are one of the first to be put in this position but we will not be the last.

The formation of the new council has dominated my work at WSC for the last few months compared with it everything else pales into insignificance. The lottery is doing well and I hope that organisations will continue to register and that everyone will buy tickets. I continue to attend meetings of the Rivers Authority and devolution process. The latter is beginning to progress again as the government has given up the idea of mayors for rural areas

Please do not hesitate to contact me if you think I can help in any way.

Anthony Trollope-Bellew,  
Hurley Farm, Crowcombe TA4 4AJ  
Telephone : 07977 591940  
email : [atrollope-bellew@westsomerset.gov.uk](mailto:atrollope-bellew@westsomerset.gov.uk)



Quantock Group of Friends

# Christmas Coffee Morning



Tuesday 7 November 2017

10.00 am – 12.00 noon

Crowcombe Village Hall, Crowcombe

Entrance £3.00  
to include coffee and biscuits

\*Christmas-themed Stalls,  
Cakes & Produce, Raffle \*

Please bring your friends

[www.cruk.org](http://www.cruk.org)

Cancer Research UK is a registered charity in England and Wales (1089464), Scotland (SC041666) and the Isle of Man (1103). Northern Ireland charity registration pending.



In aid of

**CANCER  
RESEARCH  
UK**

PS001UK



# Top Drawer Shopping @ Crowcombe Court

Friday 13th October 2017

10am - 4pm

Light refreshments available

£2 entry

Fashion  
Home  
Interiors  
Food  
Jewellery  
Toys  
Accessories

CROWCOMBE  
COURT



In aid of

ABF

THE SOLDIERS'

CHARITY

**BINGO**

**FRI 10th NOV**  
**CHURCH HOUSE**  
**CROWCOMBE**

**FABULOUS PRIZES**

**DOORS open 7pm**  
**Eyes down 7.30pm**

**LICENSED BAR**

**RAILWAY CHILDREN PRE-SCHOOL**

**Crowcombe CofE Stogumber Primary Schools**

## **Crowcombe Parish Council**

The latest Parish Council Meeting was held on 7<sup>th</sup> September 2017 at Church House. The full draft minutes are available on the website for a more detailed description of events, but this report highlights some of the key points covered.

### **County Councillor's Report:**

Cllr Christine Lawrence's report focused on the achievements of Somerset County Council with particular regard to health and care issues.

She reported that Jeremy Hunt, Secretary of State for Health, had written to SCC to congratulate on the exceptional improvement that has been made in reducing delays for people leaving hospital. Additionally, SCC has recently been rated by The Care Quality Commission as having over 87% of care facilities rated as either good or outstanding – this makes Somerset close to being the national leader in this area.

The Joint Strategic Needs Assessment (JSNA) for this year has been published (it can be accessed at [www.somersetintelligence.org.uk/jsna](http://www.somersetintelligence.org.uk/jsna)) and the report looks at what people can do to age well and how SCC can improve the life experience of older people.

### **Refurbishment of Historic Finger Posts:**

Two parishioners have recently attended the fingerpost workshop run by SCC and are keen to start with surveying the posts in the parish. Parish councillors resolved to approve a small 'starter' budget to fund cleaning and repair materials, with the aim to review the budget once some work has been completed and costs can be better estimated. Councillors thanked the volunteers for their efforts; if you feel that you would like to become involved in this worthwhile project to preserve the iconic Somerset finger posts in the parish, please get in touch with the Clerk to find out more.

### **Verge cutting regarding sensitive flora and fauna:**

Somerset Highways have offered to meet up with the parishioner who highlighted the presence of the orchids in the verge near the tennis court to establish their exact location, and protection, regarding future mowing schedules.

### **Finances:**

The clerk reported that the balance total held by the council as of 31/7/17 to be £21,204.61 consisting of £8,422.77 in the current account, £3,224.98 in the deposit account and £9,683.99 in the amenities account.

**External Auditors report on 2016/17 audit:**

The clerk reported that the External Auditors, Grant Thornton, had completed the 2016/17 audit and have confirmed that the information in the Annual Return is in accordance with proper practices and that no other matters have come to their attention that give cause for concern that the relevant legislative and regulatory requirements have not been met by the Parish Council.

**Somerset County Council, Chairman's Award for Service to the Community:**

The Parish Council's nomination of Mr Peter Menneer for the [Somerset County Council, Chairman's Award for Service to the Community](#) has been completed and submitted by The Chairman.

**Next Parish Council Meeting:**

The next Parish Council meeting will be held on Thursday 2<sup>nd</sup> November 2017 at Church House, commencing at 7.30pm and the agenda will be available prior to the meeting (both online and on the parish notice board).

# *Christmas*



# *Craft Fair*



*Crowcombe Church  
House*

***Saturday 11<sup>th</sup> November***

*Beautiful gifts and stocking fillers*

***10.00am – 4.00pm***

*Tea/Coffee and homemade cakes served all day  
with proceeds going to Crowcombe Pre – School*

***Free Entry and Parking***

# Crowcombe Cinema in October

## Your local village cinema

**Sunday 15<sup>th</sup> October**

**Their Finest**

Their Finest stands tall in the war film genre, as well as in period drama and feminist film. With beautiful cinematography, it nostalgically evokes the tensions and deprivations of London in 1940. At the same time, it provides an instructive insight into the making of a war propaganda movie in the early days of film history. Starring Gemma Arterton, Sam Claflin and Bill Nighy



**12A; 1 hr 57 mins; COMEDY, DRAMA, ROMANCE**

**Friday 27<sup>th</sup> October**

**Denial**



Acclaimed writer and historian Deborah E. Lipstadt (Rachel Weisz) must battle for historical truth to prove the Holocaust actually occurred when David Irving (Timothy Spall), a renowned denier, sues her for libel.

“As flat-earthery returns to the world, this drama about a historian’s pursuit through the UK justice system by a Holocaust denier is refreshing and very pertinent.”

**12A; 1 hr 49 mins; BIOGRAPHY, DRAMA,**

Come and enjoy a social evening with your friends at Crowcombe Cinema. Our shows are in Crowcombe Hall (TA4 4AQ) and start at 7:30pm with doors open at 7:00pm. Come early and enjoy a glass of wine or beer, and don’t forget the ice creams in the interval.

Tickets are £6:00 per show and available from Crowcombe Post Office or reserve seats by emailing [crowcombecinema@gmail.com](mailto:crowcombecinema@gmail.com) and pay at the door.

**Sunday 12<sup>th</sup> November**

**The Levelling**

**Set and filmed on location on the Somerset Levels** in the aftermath of the 2014 floods. Clover Catto returns home, to the devastated family farm on the Somerset Levels, after hearing of her brother Harry's death. Her discoveries send her on an emotional journey of reckoning - with her family, her childhood and herself.

*"A tremendous debut from Hope Dickson Leach"*



**15; 1 hr 23 mins; DRAMA.**



**Friday 24<sup>th</sup> November A Man Called Ove**

Ove, an ill-tempered, isolated retiree who spends his days enforcing block association rules and visiting his wife's grave, has finally given up on life just as an unlikely friendship develops with his boisterous new neighbours. A light hearted, charming film which people of all ages will enjoy.

*In Swedish with subtitles.*

**15; 1 hr 56 mins; COMEDY, DRAMA.**

**Sunday 10<sup>th</sup> December**

**Hampstead**

An American widow (Diane Keaton) finds unexpected love with a man (Brendan Gleeson) living wild on Hampstead Heath when they take on the developers who want to destroy his home.

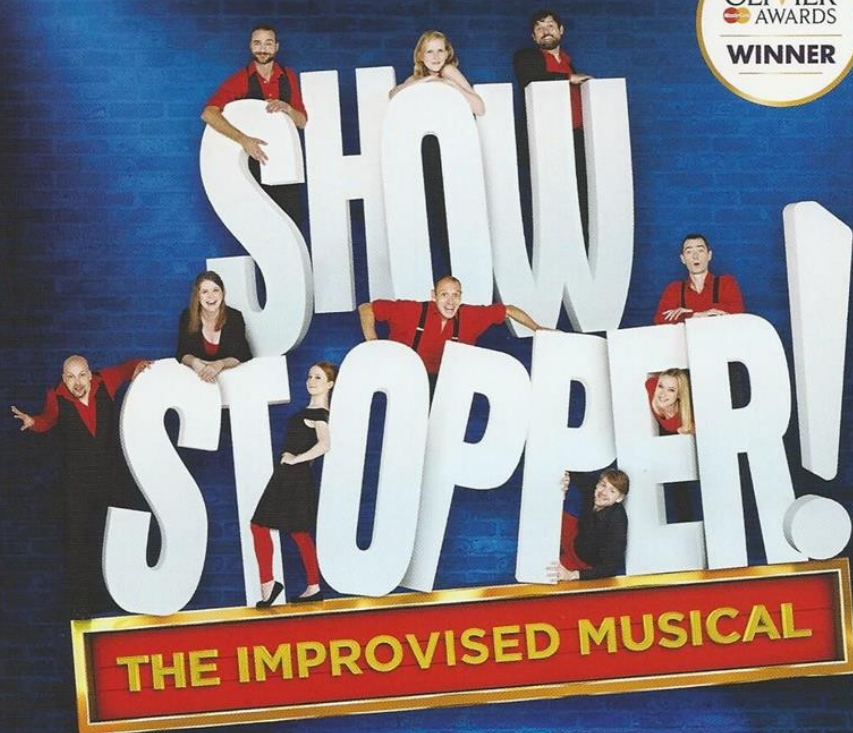
*"Diane Keaton and Brendan Gleeson are brilliant in this sweet, humorous and touching tale of second chances set against the backdrop of one of North London's most beloved areas."*



**12A; 1 hr 42 mins; COMEDY, DRAMA, ROMANCE**



THE *SHOWSTOPPERS*



‘Had me weeping with laughter...  
you absolutely have to go.’

Mail on Sunday



‘So polished,  
it defies belief.’

Daily Telegraph



CROWCOMBE COURT  
QUANTOCKS • SOMERSET

Crowcombe, Somerset TA4 4AD

**THUR 16 & FRI 17 NOV, 7.30PM**  
**BOX OFFICE 01984 618752**  
**CROWCOMBECOURT.CO.UK/EVENTS**  
**ADMIN@CROWCOMBECOURT.CO.UK**



**'Awesome'**

The Scotsman



**'Joyous'**

Independent On Sunday



**'Genius'**

Edinburgh Evening News



**'Each performance is achingly funny.  
Worth seeing again and again.'**

Time Out Critics' Choice



**'Magical, properly funny. A triumph.'**

The Times



**'Some of the superb musical pastiches they think up  
might make a few West End veterans blush. Brilliant.'**

Financial Times

### **2016 Olivier Award Winner - Best Entertainment & Family Show**

With ten years as an Edinburgh Fringe must-see phenomenon, a BBC Radio 4 Series, a critically acclaimed West End run AND an Olivier Award to their name, The Showstoppers have delighted audiences across the globe with their ingenious blend of comedy, musical theatre and spontaneity.

Now heading to Crowcombe Court, three of the Showstoppers (and a musician!) will create a bespoke one hour musical based purely on your suggestions! This incredible comedy troupe never fail to impress as they create shows packed with drama, dazzling dance routines and catchy melodies.

So whether you fancy Sondheim on a ski lift or Cole Porter in Poundland – you suggest it and the Showstoppers will sing it!



**Crowcombe Court**

Crowcombe, Somerset TA4 4AD

**Box Office: 01984 618752**

[crowcombecourt.co.uk/events](http://crowcombecourt.co.uk/events)

[www.theshowstoppers.org](http://www.theshowstoppers.org)



@TheShowstoppers

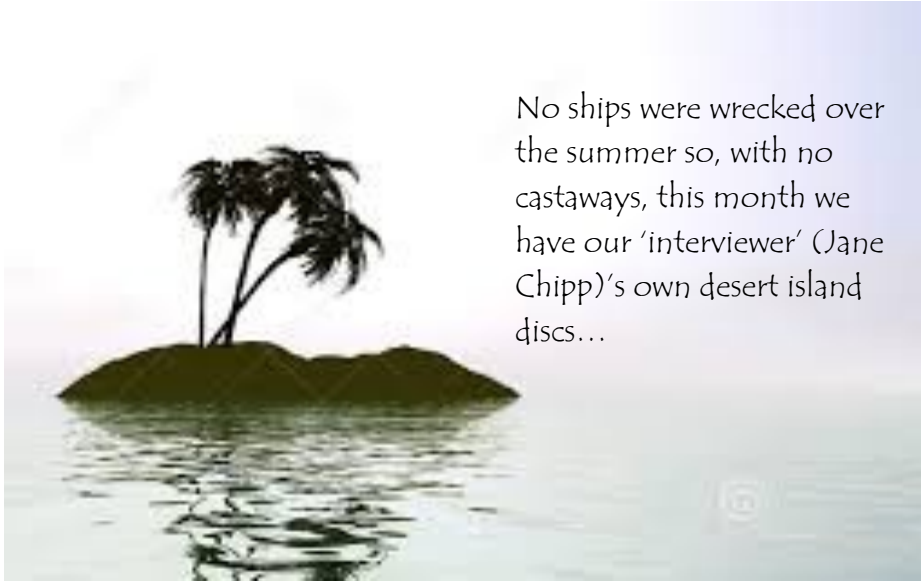


[facebook.com/theshowstoppers](https://facebook.com/theshowstoppers)

Original artwork design: BoomEnts.com



# DESERT ISLAND DISCS



No ships were wrecked over the summer so, with no castaways, this month we have our 'interviewer' (Jane Chipp)'s own desert island discs...

## GUESTS' RECORD CHOICE

- 1: **"I would rather go blind" – Etta James**  
I first heard this played by a local band where I grew up in Derby and have always loved it. This summer I took part in a tall ships race and one of my team mates played it often on the boat. It brings back memories of wonderful times and laughter.
- 2: **"Miserere Mei" – Allegri**  
I was in a church choir as a child and enjoy choral music. This piece is sublime...it is how I imagine Heaven would sound.
- 3: **"Creep" – Radiohead**  
This song was released in 1993. At the time I was sharing a house with a friend in Nottingham and it seemed to be played everywhere. It reminds me of very carefree times.

**4: "Born Slippy - Underworld**

I saw Underworld play at a festival in the late 90's and experiencing this track played live was incredible. It's hard to describe why I like it so much, but it's partly because of the contrasts between the chanting and drumming which builds to a crescendo and then moves on to some beautiful softer sections.

**5: "A New England - Billy Bragg**

it was hard to choose just one Billy Bragg track. Like many people, I was very idealistic in my youth and, whilst I've mellowed, I still love the messages in Bragg's songs.

**6: "Little girl blue - Janis Joplin:**

one of the many highly talented female singers who died too young. This is a very sad song but also very beautiful and Joplin's voice really conveys her emotions.

**7: "Inner Smile" - Texas**

this is such a feel-good song. As soon as I hear it I smile and want to dance. It is in my will that I want this played at my funeral!

**8: "Heart of Gold" - Neil Young**

my best friend and I used to listen to Neil Young and Crosby, Stills and Nash a lot in our teens. It was the soundtrack to us getting ready to go out on a Saturday night, and eating toast and Marmite to at the end of a night out.

**My chosen book:** "Love, Nina' by Nina Stibbe. I would like to have chosen something more impressive and highbrow but, on the desert island, I think I will want something that will make me laugh. I've read this several times and still laugh out loud at it.

**My luxury:** A needle, some threads and some linen will keep me very happy. I sew all the time and can pass any amount of time happily absorbed when stitching.

**Thank you Jane.**

Crowcombe Hall Management Committee

# **Fireworks Night**

## **at the Crowcombe Hall**

**Friday, 3rd November**

**Gates open at 6.30 pm**

**Fireworks start at 7.00 pm**

**Bring your friends and family  
to enjoy a spectacular  
display!**

**Adults - £5.00**

**Children - £2.00**



**Bar**  
**Hot food**



**No sparklers to be brought in, please.**



WOODLAND  
PLAY CENTRE



connecting with nature for joy

COME ALONG & JOIN US THIS

## October Half Term 2017

Wednesday 25th October, 2017

### Woodland Adventure Day 'Exploring Exmoor'

8 years+

10.00am - 4.00pm

£25 pp



Thursday 26th October, 2017

### Woodland Adventure Day

8 years+

10.00am - 4.00pm

£25 pp



Thursday 26th October, 2017

### 'Secret Spooky Woods'

Woodland Family Fun

For under 8's

10.30am - 1.30pm

£6/child, £4/adult,

Family Ticket (2+2) £18



### Autumn Adventures at the Woodland Play Centre.

Outdoor exploration and family fun with crafts and refreshments. Or alternative holiday childcare for the adventurous child!

Call: 07775 941353


Email:

[info@woodlandplaycentre.co.uk](mailto:info@woodlandplaycentre.co.uk)

More details on

[www.woodlandplaycentre.co.uk](http://www.woodlandplaycentre.co.uk)

Located between Crowcombe  
Heathfield & Lydeard St  
Lawrence, near Taunton,  
Somerset



**BOOK NOW!**





## Watch Schemes Newsletter Somerset Autumn 2017

### Neighbourhood Policing Support Team

As the very busy Summer comes to an end I would like to introduce you to the new Neighbourhood Policing Support Team so you know what we do and how we can help.

Last April the pre-existing Local Policing Support Teams merged to become the Force wide Neighbourhood Policing Support Team with responsibility for Crime Prevention and Reduction, Crime Prevention Carpenters, Licensing, Restorative Justice, Rural Crime, Citizens in Policing and of course Neighbourhood Watch.

Together with Sergeants Nigel Chapman and Jon Hill, I manage the team Constabulary wide to ensure that we work together to deal with the matters that most affect our communities, and also that there is continued local buy-in and support, as each geographical area has its own unique issues and concerns. Key to this is Lindsey who will continue to provide her usual unwavering support to Somerset Neighbourhood Watch, and do her best to link in with the rest of the Team to make sure Somerset residents feel safe and be safe.

Another significant development is the formal establishment of the National Neighbourhood Watch Association within Avon and Somerset. This is a volunteer body of Neighbourhood Watch Coordinators who will work closely with Lindsey and other members of the team to develop Neighbourhood Watch, promote and encourage best practice, provide materials and support and deliver advice and key messages. We very much welcome them on board and look forward to developing this relationship over the coming year.

Thank you all for your continued support.

*Inspector Lee Moore*

**Neighbourhood Policing Support Team**

From Jan and Tony Allen—Neighbourhood Watch



# Ladies' Day

by Amanda Whittington  
DIRECTED BY: JANE BURT

NOVEMBER 2017

2ND CROWCOMBE, 3RD HATCH BEAUCHAMP  
9TH / 10TH / 11TH TACCHI MORRIS,  
16TH STOKE ST GREGORY, 17TH LANGFORD BUDVILLE,  
18TH CHEDDON FITZPAINE.

PERFORMANCE STARTS 7.30PM. TICKETS PRICED AT £10 (EXCEPT THE TACCHI MORRIS £12)  
AN AMATEUR PRODUCTION BY ARRANGEMENT FROM NICK HERNE BOOKS

WEB: WWW.AT2K.COM
EMAIL: AT2K@ICLOUD.COM
MOB: 07943 495088



The Carew Arms  
Crowcombe  
TA4 4AL

(01984) 618631

[www.thecarewarms.co.uk](http://www.thecarewarms.co.uk)

It's our favourite time of year at The Carew  
'Season of mists and mellow fruitfulness!'

What a great time to enjoy the view from our restaurant as the leaves fall and we feel that every sunny day is a bonus. For dog-walking, kicking through piles of leaves, and stopping for a drink and a plate of goodness as reward at the end!

Our new menu is now available, so why not come and visit and see what we have to offer?

For Bonfire Night, and throughout Autumn, we have traditional 'Bangers and Mash' with a rich onion gravy, and Hallowe'en brings thick creamy butternut squash soup – all the flavours of the season.

We are prepared for the next part of the year too, so if you are booking your Christmas parties, do get in touch. We have a choice of two- or three-course menus which will fit the bill.

We look forward to seeing you at your local pub!

Emma, Iain, Jamie and the team



# HALSWAY

## MANOR

National Centre for Folk Arts

---

Enjoy, explore and learn about the folk arts through our year-round programme of courses, events and activities for all ages and abilities.

---

Workshops  
Live music  
Dancing  
Choir  
Singing  
Young Folk  
Maypole  
Storytelling  
Instrument making  
Craft  
and more...



---

[www.halswaymanor.org.uk](http://www.halswaymanor.org.uk)  
01984 618274







# • J & J Catering •

[JnJCatering.co.uk](http://JnJCatering.co.uk)

Offering catering for all occasions in Somerset

\* Weddings \* Anniversaries \* Special occasions \*  
Funerals \* Agricultural events

We offer flexibility to tailor our services to suit  
your needs and budget.



For more information please contact:

Charley Long

[jjcatering@outlook.com](mailto:jjcatering@outlook.com)

01984656861 / 07590846727

Brewers Water Farm, Crowcombe, Taunton, TA4 4BH



# **FREE TRIAL CLASS!**

## **EXPERT DANCE, FITNESS AND ACROBATIC TUITION AT CROWCOMBE.**

**SOSA SALSA FITNESS  
PRE & PRIMARY BALLET  
GRADE 1 BALLET  
JUNIOR STREET DANCE  
ACROBATIC ARTS - GYMNASTICS**

## **WWW.DANCEMORE.ORG.UK**



# QUANTOCK HILLS APARTMENTS



## SOUTH WING, CROWCOMBE COURT

The South Wing of Crowcombe Court has two comfortable and well appointed ground floor apartments available as holiday lets.

Each apartment has 3 bedrooms (sleeping 5 guests), an open plan living area and access to the communal orchard garden

[www.quantockhillsapartments.co.uk](http://www.quantockhillsapartments.co.uk)

[admin@crowcombecourt.co.uk](mailto:admin@crowcombecourt.co.uk) • 01984 618752

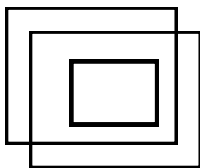
**Ian D LEE**

## CARPENTER

Local, experienced and reliable

All aspects of carpentry and general building

- Structural Timber Work
- Locks latches and catches
- Solid Timber Flooring
- Cellar and Basement Conversions
- Doors & Windows
- Kitchens & Bedrooms
- Property Refurbishment
- City & Guilds Qualified



Anything undertaken

Please call **ian** for free quote on

Home: 01984 618795

Mobile: 07984 671912

Or email [ian@iandlee.co.uk](mailto:ian@iandlee.co.uk)

***Selling Your House?  
Moving Home/Office?  
Need somewhere to put your furniture,  
or just clear some space?***



**150 Priorswood Road,**

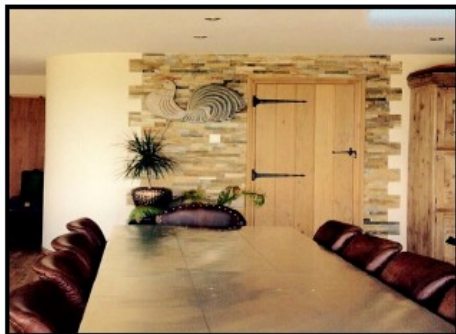
**Taunton, TA2 8DU**

**01823 323575**

**[www.beehiveselfstorage.co.uk](http://www.beehiveselfstorage.co.uk)**

# Taunton PLASTERING AND BUILDING SERVICES

FOR YOUR FREE QUOTATION CALL RAY ON: 07889 435693  
OR EMAIL US AT: INFO@TAUNTONPLASTERING.CO.UK



Domestic and Commercial Work  
All Aspects of Plastering  
Artex Ceilings  
Removal of Artex Ceilings  
Lime Plastering and Restoration Work  
Rendering and Screeding  
Building Extensions  
Swimming Pools  
Damp Proofing (guaranteed work)  
Tiling  
Project Management  
General Building and Maintenance  
Consultancy Service  
Insurance Quotations  
Painting and Decorating

[WWW.TAUNTONPLASTERING.CO.UK](http://WWW.TAUNTONPLASTERING.CO.UK)

## COOK

[www.cookfood.net](http://www.cookfood.net)

Delicious frozen meals that look and taste  
homemade. Free Delivery with a minimum spend  
of £30. Order online or call  
01823 323001

Alternatively, Astrid and Chris would love to see  
you in their shop on Corporation street  
in Taunton





At **Red Deer Country** we combine the best of both the traditional 'high street' agency service and a cost effective online service.

- ❖ Great online exposure
- ❖ Local knowledge and expertise
- ❖ Highly competitive pricing

**Email:** [info@reddeercountry.co.uk](mailto:info@reddeercountry.co.uk)

**Sales:** 01984 631153

**Lettings:** 01984 634579



**[www.reddeercountry.co.uk](http://www.reddeercountry.co.uk)**

# West Somerset Advice Bureau



## Free confidential advice on:

- ◆ Welfare benefits     ◆ Debt
- ◆ Housing problems   ◆ Employment
- ◆ Consumer issues
- ◆ Divorce and family matters

### Contact West Somerset Advice Bureau

The Lane Centre, Market House Lane, Minehead TA24 5NW

Tel: 01643 704624

Email: [enquiries@westsomersetadvice.org.uk](mailto:enquiries@westsomersetadvice.org.uk)

[www.westsomersetadvice.org.uk](http://www.westsomersetadvice.org.uk)

Opening hours on: Monday, Tuesday, Thursday and Friday 10am - 3pm

Wednesday 10am - 1pm (closed first Wednesday of the month)

Telephone Advice Service: same as opening hours above.

Also at:

Watchet Surgery, Thursday 10am –12noon

Williton DoctorsSurgery Wednesday 10am - 12noon

Exmoor Medical Centre, Dulverton Tuesday 10am-12noon





# Terry James

Bathroom, Wetroom & Kitchen Installations

No-Obligation Quotes

Bespoke Design & Installation

Supply & Fit or Fit Only Service

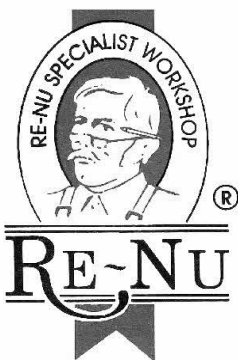
Call Terry on

**07905 467778**

[www.terry-james.co.uk](http://www.terry-james.co.uk)



## WANT A NEW KITCHEN?



**RE-NU** make doors and drawer-fronts **any size**, which we fit onto your existing kitchen cupboards and bedroom wardrobes.

We also fit new worktops, extra cupboards, sinks and appliances.

Complete kitchens also supplied and fitted

**LESS TIME, DISTURBANCE AND  
COST**

Telephone: Jem Foster on 01823 401332

[www.jem@re-nukitchens.co.uk](mailto:www.jem@re-nukitchens.co.uk)



*Home Leigh House  
Crowcombe  
Somerset  
TA4 4BL*

*Bed & Breakfast  
En-suite Accommodation*

*Price from £28.00 pppn*

*Mrs Kim Hughes  
Tel: 01984 618439*



**WINDOW & DOOR DOCTORS**

**Window & Door Repair Service**

**Steamy Windows & Draughts  
Hinges, Handles, Locks & Seals  
UPVC, Wood & Aluminium**

**FREE ESTIMATES**

**07967 314 323**

# CONTACTS

100+ CLUB		01984 618437
CAREW ARMS		01984 618631
CAREW RANGERS FOOTBALL		01984 618281
CHURCH FLOWERS		01984 618654
CHURCH HOUSE BOOKINGS		01984 631793
CHURCH SECRETARY		01984 618715
CONSERVATIVES - WEST QUANTOCKS BRANCH		01984 618752
CROWCOMBE BABY & TODDLER GROUP		01984 618350
	katyemmadavis@googlemail.com	
CROWCOMBE BELLRINGERS		01984 618715
CROWCOMBE BOOK CLUB		01984 618287
CROWCOMBE CRICKET CLUB		01984 618670
CROWCOMBE CARS		01984 618263
CROWCOMBE COURT OFFICE		01984 618752
CROWCOMBE KARATE CLUB		07914 411980
	Mizuchiwadokai@gmail.com	
CROWCOMBE & STOGUMBER PRIMARY SCHOOLS		01984 618273
office@crowcombe.somerset.sch.uk / crowcombeandstogumberprimaryschools.co.uk		
CROWCOMBE HALL	crowcombehall@hotmail.com	01984 618254
CROWCOMBE PLAYERS		01984 618624
CROWCOMBE PRESCHOOL	crowcombepre-school@hotmail.co.uk	07790 231003
DISTRICT COUNCILLOR;— ANTHONY TROLLOPE-BELLEW		07977 591940
	ATrollope-Bellew@westsomerset.gov.uk	
FILM NIGHTS		01984 656720
FLOWER SHOW		01984 618249
MAGAZINE EDITOR		01984 631793
NEIGHBOURHOOD WATCH: VILLAGE HALL END		01984 618333
NEIGHBOURHOOD WATCH: MIDDLE		01984 618380
NEIGHBOURHOOD WATCH: SCHOOL END		01984 618738
NEIGHBOURHOOD WATCH—CROWCOMBE HEATHFIELD		01984 618215
PARISH COUNCIL CLERK	Claire Morrison-Jones	01823 601495
POST OFFICE		01984 618471
RURAL DEAN	flenbenley@btinternet.com	01984 633568
SCOTTISH COUNTRY DANCING		01984 618654
SHORT MAT BOWLS		01984 618444
SOUP KITCHEN		01984 618289
TENNIS CLUB		01984 618727/01984 618738
VILLAGE SHOP		01984 618452
WI		01984 618715/01984 618249
WOODLAND PLAY CENTRE		07775941353
	info@woodlandplaycentre.com / www.woodlandplaycentre.com	
YOGA	beccyjh@yahoo.co.uk	01984 618237