

CAW

Crowcombe

Village Magazine

DECEMBER 2017 — JANUARY 2018



*Wishing all the readers a Joyous
Christmas and Peaceful New Year
for 2018*



Please email any contributions to me:
maggie.inglis@btinternet.com:
phone 01984 631793
I The Almshouses, Woolston, TA4 4LN
Please email or post items to me for insertion.
*I am happy to include one off adverts
Small charge may be applied to cover costs.*





CROWCOMBE CHURCH SERVICES

December 2017 and January 2018

December 2017

Sun 3rd	11.00am	Family Service
Mon 4th	10.30am	Weekday Communion Service
Sun 10th	10.30am	CW Benefice Communion at Sampford Brett
Sun 17th	5.00pm	Carol Service
Sun 24th	4.00pm	Christmas Eve Crib Service
Mon 25th	10.00am	Family Communion

January 2018

Mon 1st	10.30am	No Service as Bank Holiday
Sun 7th	11.00am	Family Service
Sun 14th	8.00am	CW Benefice Communion at Bicknoller
Sun 21st	8.00am	BCP Communion
Sun 28th	11.00am	BCP Morning Prayer

February 2018

Sun 5th	11.00am	Family Service
---------	---------	----------------

Please be assured of a most warm welcome if you attend any of our services.

Should anyone require transport to any of the Benefice Communion services away from Crowcombe, please contact the Revd Jon Rose on 01984 618715 or Sue Jenkins on 01984 631995 to make an arrangement.

BCP = Book of Common Prayer – traditional worship

CW = Common Worship – more contemporary worship



CROWCOMBE

TRADITIONAL CAROL SERVICE

In the parish church on:

Sunday 17th December 2017 at 5:00 pm

Followed by mulled wine and mince pies

Everyone is most welcome



One of the joys of belonging to WI is the fact that one learns something new each meeting. Our October meeting “Why Exmoors are Special” (ponies that is) was enlivened by our speaker, a hill farmer on Exmoor. His whole life has involved a passion for these wonderful creatures, and at 84 years old, an enthusiasm for life which puts most of us to shame. As chairman of the Exmoor Pony Society, as well as a judge of other livestock, he travels to other countries, mostly Germany these days, to encourage others to ensure that the bloodlines of these ponies are kept pure.

Exmoor ponies are surviving representatives of Britain's wild pony which arrived about 130,000 years ago, and this type of pony has seen people evolve from the Stone Age up to the present day. Despite their small size, Exmoor ponies are extremely strong and quite capable of carrying adults as well as children. Amazing that just one small animal population living on Exmoor has escaped the melting pot and remains a natural animal—all down to the history of Exmoor and the natural traits of Exmoor people to conserve this special pony.

We welcomed Emma Duke to our November meeting who gave us a fascinating insight into her fairly new craft career (following some years in a high powered position in the commercial world) with her talk on the magic of driftwood and the Bristol Channel. The attraction of searching for driftwood on the beach, especially after a storm when other treasures may also be found, adding a warning to always watch the tide in the Severn estuary. Apart from collecting driftwood to add to my very occasional flower arranging efforts, I had given little thought to the further possibilities of driftwood, but Emma has taken it to a whole new level, and has embarked on another career in arts and crafts with an emphasis on using various types of driftwood, examples of which she circulated amongst her audience to experience the feel and shapes of the wood. We were particularly impressed by her gift for using driftwood in all its varieties for creating amazing 3D pictures especially of horses, and her other creative talents, and very pleased to hear her plans shortly to join the Crowcombe community to continue her venture.

Beryl Ayres

Note: Our Christmas meeting is on December 13th. Please remember to bring items for the Women's Refuge who we support at Christmas.

Thank you

Pat Chittenden.



DANGER
bells are
up

The Annual Crowcombe Tower Bell Ringers' Outing 2017

On Saturday 18th November the Crowcombe bell ringers enjoyed once again their annual ringing autumn outing. This annual event has taken place since 2009 and has become like so many towers a firm fixture in the local ringing year.

Including our guest Chris Mitchell, the Dunster Branch Chairman, twelve of us left in fine weather the Crowcombe Church House car park at 8.15am (some bemoaning once again no bacon butties to see us on our way) and travelled in car convoy to the north of Bridgwater. Our first ring was at Cossington Church, an 11cwt six, where considering the early start our ringing was most creditable. We moved on next to the light eight at Woolavington where we told the bells were already in the up position for ringing and could be left so when we had finished. As is invariably the case for all bands, this was for us a most pleasant discovery. As a Crowcombe team we ring very infrequently on eight bells. However, our performance was most encouraging and we left Woolavington for our short coffee break feeling quite pleased with ourselves.

The two remaining towers for the morning were the 14 cwt sixes of Puriton and Pawlett either side of the M5 and A38. Both peals presented some challenges but once again our rounds and call changes...and even a short touch of Bob Doubles, gave no great cause for concern to any of the listening public. Lunch now beckoned at the nearby Puriton Inn and an excellent repast was experienced by all. We left feeling nicely satisfied in all respects to return to the Crowcombe car park by 3.00pm.

We say a big thank you to all the tower correspondents who met us at our four rings during the morning and for the preparations they made on our behalf. Peter Hood, our newest ringer at Crowcombe, and only around 3 months into learning, rose to the challenge of new towers and bells amazingly well. Well done Peter.

And so we look forward to our next expedition away from Crowcombe in 2018.

Jon Rose, Tower Captain, Crowcombe Church

Dear Fellow Villagers,
Just to give you notice of a number of things happening at
Crowcombe Court in December.
**Thursday 7th – Emergency Fire Services Exercise some-
time between 7pm and 9pm**
Two Private Functions with fireworks.
**Saturday 9th – for approx. 5 mins between 9.50pm and
10pm**
Sunday 31st – for approx. 5 mins at Midnight
Apologies for any inconvenience this may cause.
The Crowcombe Court Team

Crowcombe Cinema in October

Your local village cinema

Sunday 10th December Hampstead



An American widow (Diane Keaton) finds unexpected love with a man (Brendan Gleeson) living wild on Hampstead Heath when they take on the developers who want to destroy his home.
“Diane Keaton and Brendan Gleeson are brilliant in this sweet, humorous and touching tale of second chances set against the backdrop of one of North London’s most beloved areas.”

12A; 1 hr 42 mins; COMEDY, DRAMA, ROMANCE

Come and enjoy a social evening with your friends at Crowcombe Cinema. Our shows are in Crowcombe Hall (TA4 4AQ) and start at 7:30pm with doors open at 7:00pm. Come early and enjoy a glass of wine or beer, and don't forget the ice creams in the interval.

Tickets are £6:00 per show and available from Crowcombe Post Office or reserve seats by emailing crowcombecinema@gmail.com and pay at the door.

Report from West Somerset Council by Anthony Trollope-Bellew.

Forming the New Council : still we have not received any news on when the Secretary of State will make a decision. He has made a "minded to" decision on the amalgamation of two districts in Suffolk and the formation of two unitaries in Dorset. These were in front of us in the queue so hopefully we may get a decision in the near future. But we are still totally in his hands there is nothing more that we can do.

Budget : setting the budget for next year (2018/19) is progressing and looks as though we can set it without too much pain. However as I write this I await for the Chancellor's budget details. We may be in for some nasty shocks. Also local authorities are not informed of their final settlement until December.

Hinkley Point C : this project is now enormous. I visited at the end of last month and it has changed out of all recognition. They have not actually started building the reactors yet, everything that is on site at the moment is to allow them to start building the reactors. There are 2500 people working there now but this is due to double at the height of construction. I am glad to say that some of the benefits are beginning to be seen in the form of local employment. If anyone has a room they wish to let to a construction worker please contact me.

A joint committee for Somerset and Devon : approval for this is coming to full Council in December. Producing a productivity plan that will help local businesses become more efficient is the first project. You have probably seen on the news that it takes a British worker five days to produce what a French or German one can produce in four days. This is partly due to past government policies concentrating on employment rather than productivity. The government has dropped the idea that rural areas will need an elected mayor to enable devolution. How much power will be devolved from central government we wait to see.

Please do not hesitate to contact me if you think I can help in any way.

Anthony Trollope-Bellew,
Hurley Farm, Crowcombe TA4 4AJ
Telephone : 07977 591940
email : atrollope-bellew@westsomerset.gov.uk



CHURCH HOUSE, CROWCOMBE

Registered Charity No. 265554

Thank You, Crowcombe

Back in 2004 Geoffrey Billson, in his capacity as churchwarden and ex officio a trustee of Church House, called a village consultation meeting on what should be the priorities for the future of Crowcombe's much loved heritage community building, Church House.

It was a very well attended occasion. The outcome, as it turned out, was a decision to appoint a new management committee to take forward the various options under consideration at the time. When the minutes of this meeting were circulated round the village, it transpired that Mr Menneer (to his surprise) was to serve on this committee - and to be its chairman.

We duly debated options for the future of the building, and quickly came to a view - later endorsed by our trustees - that the initial priority should be refurbishment of the building's facilities.

Three years later Church House had an oil-fired central heating system, new lighting upstairs and down, a fully equipped Served and two WCs.

But none of this would have happened without the support of this remarkable village that we are privileged to be part of. Crowcombe has always been so supportive of its community ventures - whether building a village hall, setting up a community shop, equipping a children's playground, retuning its church bells, driving Crowcombe cars or holding a flower show.

For this enterprise, refurbishment of Church House, we had to raise about £75,000. In no time over £20,000 had been raised in the village by a combination of family donations and fund raising events. These included the Snowdrop Ball held at Crowcombe Court at Patsy's invitation. The balance was covered by a combination of local authority grants and successful applications to grant foundations.

Ten years later, in 2014, we embarked on a new challenge - to tackle the external conservation of the building. About £65,000 was needed. We knew that the funding-raising would be more difficult:

- The earth-fill site at Williton was no longer active. As a result Church House was no longer eligible for a Viridor Credits grant.
- The age of austerity was upon us. Local authority budgets were squeezed..
- We were too early to be eligible for a Hinkley Point mitigation grant.

But again you, the villagers of Crowcombe, came up trumps. This time we raised nearly £30,000 through a combination of over 60 family donations, the 100+ Club, and contributions from community organisations within the village: the shop, the fireworks committee, the flower show and the soup kitchen. Another ball had taken place at Crowcombe Court - the Primrose Ball at the invitation of David and Kate, and Sheila had held her Open Gardens event.

This evidence of local community support was, I am sure, key to four successful grant applications and - later - the Heritage Lottery Fund.

A condition of HLF funding was the requirement that we should set up a wide range of activities to achieve 'outcomes for people and the community'. All these have been honoured - including invitations sent to 30 local archaeological societies and 10 schools to send groups to Church House for a powerpoint historical talk on the history of this remarkable building. Bookings are beginning to roll in for next year. We are inviting them first to visit the church. Priscilla has gallantly volunteered to look after them. It was, after all, the Church that took the initiative in 1515 to build Church House in the first place.

After the talk our archaeologists will probably want to pay a visit to the quarry behind Lawford Farm - with permission from Ricky Lewis. This is where the stone for the building of Church House and the south aisle of the church was quarried, and brought half a mile up to the building site by horse and cart - up Carters Lane.

Meantime the Menneer and Brew *History of Church House* continues to be sold. This, though I say it myself, has fascinating tales of Crowcombe over the centuries. Catherine Brew and I poke gentle fun at Anthony's somewhat testy great grandfather. If you wonder why a drain had to be constructed under the building to take the rainwater from the rear of the building to drains at the front of the building, it was because Mr Trollope would not permit a soak-away in his orchard behind Church House.

But the real hero of the Church House story is of course the Rev Henry Christian Young who restored the building just over 100 years ago. He restored the roof, rebuilt the Gallery floor and largely reconstructed the wall adjacent to the pound. Then in the '90s Ian Billinge, during his long stint running Church House affairs, had the much improved internal staircase installed.

Roger Goodwin (my successor as chairman) and I together with my erstwhile committee colleagues thank you - the villagers of Crowcombe - for your crucial financial contributions to these two community projects.

You have been key to the fulfilment of our role as custodians of this remarkable grade 2* historic building of national significance.

We thank you all.

Peter Menneer

Crowcombe Parish Council

The latest Parish Council Meeting was held on 2nd November 2017 at Church House. The full draft minutes are available on the website for a more detailed description of events, but this report highlights some of the key points covered.

County Councillor's Report:

Cllr Christine Lawrence's provided an extensive report covering winter information from SCC, the re-opening of the Somerset rural life museum, the A303 preferred route is Sparkford to Ilminster is declared, SCC children's' department is consulting on early help to get children school ready and a reminder to all eligible people to get their flu jab.

Refurbishment of Historic Finger Posts:

The two finger post volunteers have so far surveyed 10 fingerposts in the parish. 7 are in need of repainting and some components replacing, and 3 just need a clean. They are also in the process of arranging a meeting with Andy Stevenson, the AONB ranger, to discuss the posts in the parish that fall within the AONB

Finances:

The clerk reported that the available balance held by the council as of 19/9/17 to be £25,285.00, accounted for with unpresented cheques of £170.00 and £12,545.81 in the current account, £3,225.04 in the deposit account and £9,684.15 in the amenities account

West Somerset Flood Group

Crowcombe Parish Council has been invited to nominate a representative to attend flood group meetings. Unfortunately, most of the parish councillors are still in full time employment and this causes a problem as the meetings are generally held during the day. If any parishioner feels that they would like to attend the next meeting on behalf of Crowcombe, and report back at the following parish council meeting, then please contact the clerk for more details.

Waste/recycling collection over the Christmas period

Somerset Waste Partnership: Christmas and New Year collection dates have been released and will be posted on the Crowcombe website. Changes are summarised below

Monday 18 to Friday 22 Dec - No change

Monday 25 to Friday 29 Dec - All two days later, including Monday pickups on Wednesday 27 Dec and Friday pickups on Sunday 31 Dec

Monday 1 to Friday 5 Jan - All one day later, including Friday pickups on Saturday 6 Jan

Speeding on Country Lanes

It was noted by councillors that there appear to be ever increasing incidences of speeding along the country lanes in the parish, in particular along the road that links Crowcombe to Stogumber. Whilst the legal speed limit for many of Crowcombe's lanes may be 60mph, this is not a goal that drivers should strive to achieve! Excessive speed along twisting, often single-track roads, leaves very little time to react to any hazards encountered, be that horse riders, walkers, wildlife or oncoming vehicles.

Please take care on your journey...that extra minute taken to arrive at your destination may just save a life.

Next Parish Council Meeting: The next Parish Council meeting will be held on Thursday 4th January 2018 at Church House, commencing at 7.30pm and the agenda will be available prior to the meeting (both online and on the parish notice board).



POPPY APPEAL 2017

The village collection raised £677.50 for the Royal British Legion.

Thank you to all those who contributed and helped to achieve this.

Kevin & Pat Chittenden.





The Carew Arms
Crowcombe
Taunton
TA4 4AD

Tel: (01984) 618631

www.thecarewarms.co.uk

Christmas at The Carew!

Celebrate the festive season with us at your traditional village pub. Our Christmas Menu is available from Monday 1st December – please pre-book with us to avoid disappointment.

On Friday 8th December, we will be holding our traditional Tree Lighting Ceremony. This was a heartwarming evening last year, enjoyed by all. The lights on the tree at the front of the pub will be switched on at 6.30pm to the sound of Phoenix Brass performing your favourite carols. We will serve mince pies and mulled wine – why not get together with family and friends to have a fun festive night out? We'll provide the songsheets.....!



We are open right up until Christmas Eve for our usual opening hours – Monday to Thursday 12-3pm, then 5pm-close, and Friday to Sunday, 12 midday until close. We will be closing at 8pm on Christmas Eve to make sure you're all safely tucked up in bed before Father Christmas arrives!



We would love to see you on Christmas Day itself – we are open for drinks only from 11.30am-2pm – come in and share the compliments of the season before going home to tackle the turkey!

Boxing Day starts bright and early with a 10am open to prepare for the Quantock Stag Hounds who meet in the field next to the pub at 11am. We are serving food from 12 noon, but would strongly advise reserving a table, as we are usually very busy! We will close at 6pm on Boxing Day.

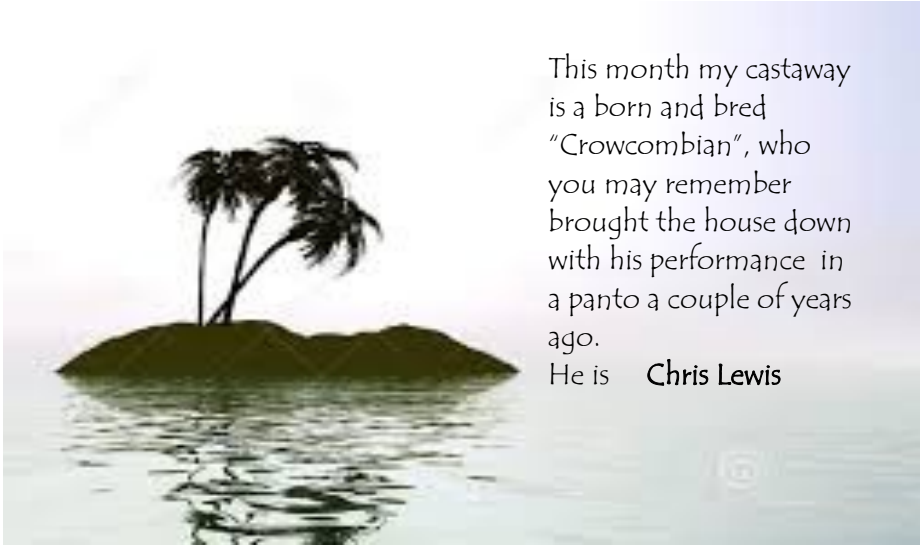
Between Christmas and New Year we are open all day every day until Monday 5th January, when normal hours resume.

New Year's Eve will also be a traditional affair. Our restaurant is open for reservations, and the custom is for the village to meet outside the pub to hear the bells ring in the New Year. There's a wonderful feeling of being part of the community as we all sing Auld Lang Syne – why not come and join in?

Thanks for taking the time to read this – may we take the opportunity to thank you for your custom this year and wish you all a very Merry Christmas and a Prosperous New Year. We look forward to seeing you soon!

Iain, Jamie, Will and
the team

DESERT ISLAND DISCS



This month my castaway is a born and bred "Crowcombian", who you may remember brought the house down with his performance in a panto a couple of years ago.

He is **Chris Lewis**

GUESTS' RECORD CHOICE

1: "Embarrassment" – Madness

My first ever vinyl LP was "Complete Madness" in the early eighties. This was the first song on that album and still one of my favourites. It got played to death and I still enjoy them now.

2: "The Riverflow" – The Levellers

I passed my driving test in 1990 and I had three cassettes in my car that got played over and over. "Box Frenzy" – PWEI, "30 Something" – Carter USM and "Levelling the land" – The Levellers. This one was played the most! Not a bad song on this album. I love the fast pace of this track and the fiddle. Looking forward to seeing them again in November at Butlins.

3 "Live Forever" – Oasis

Oasis were my generation's Beatles. So hard to pick one song, as they were the sound track to most of the 90s for me, but Live Forever pretty much summed up what we were all feeling then. We didn't want to know how your garden grows because we were gonna live forever!

4: "Thunderstruck" – AC/DC

I was and still am a big fan of guitar based rock music and there's none much better than Angus Young!! Love the guitar riff at the start of this track and how it builds and builds, Brilliant!! I'm afraid I'm more of a Brian Johnson fan rather than Bon Scott, which may upset the AC/DC purest but probably due to my age.

5: "The Gambler" – Kenny Rogers

Being a country boy I'm also a fan of country music. I love the stories the songs tell. So Kenny is representing my redneck side. Had many a drunken sing along to this song and was lucky enough to get close to the front to see him at Glastonbury in 2013. He was still fantastic at 75 years young.

6: "Little Lion Man! – Mumford & Sons

I am a big fan of live music, I have seen Mumford three times now and consider Marcus Mumford to be the best-sounding live lyricists I have ever heard, a truly amazing voice. This song live is an awesome singalong!

7: "Uprising" – Muse

I'd not paid much attention to Muse before I saw them at Glastonbury 2010. There are some bands that just sound so much better live than recorded and this little three piece from Teignmouth are without a doubt the best sounding live band I've ever heard. They totally blew me away! This song in particular really got to me. Gonna play it loud come the revolution!

8: "One Day Like This" – Elbow

This is my all time favourite song. I don't want to get morbid but I want this played at my funeral. I love everything about it, I love the strings, I love the lyrics but most of all I love the sentiment of this song. This song to me perfectly describes being in love! Such a hippy at heart!

My chosen book: "Live Fire" by Stephen Leather. I enjoy a fast paced thriller. I don't have the concentration for fluffy descriptive writing, I don't need to know what the morning rain smelt like. I like to be put on the edge of my seat and kept there. John Grisham, Michael Connelly, Lee Child etc. Stephen Leather is my favourite writer and this particular book of his total gripped me.

My Luxury: I wasn't sure whether to own up to this, but, as a friend of mine wisely once said "Its none of my business what other people think about me". I paint Warhammer miniatures for relaxation so I would take my paints, brushes and some models to paint. There, now everyone knows how uncool I am!!!

Thank you Chris

We are now taking bookings for

Treetots 2018

Our next term dates are :

Thursday 4 January - 8 February

Friday 5 January - 9 February

Half Term Holiday 12 - 16 February

Thursday 22 February - 22 March

Friday 23 February - 23 March

£28 per child

for a half term block booking

www.woodlandplaycentre.co.uk

Joshua Waygood

Historic Building Conservation

Providing traditional lime restoration and repairs to historic buildings throughout Somerset & Devon
Lime plastering, lime rendering & lime pointing, Lime washing, traditional stonework, stone repairs cob wall repairs

07795967292

josh_waygood@hotmail.co.uk

**HARDWOOD LOGS
FOR SALE**

**HUSKY
HARDWOOD
LOGGING**

01823 27 24 54 07779 11 22 18
WWW.HUSKYHARDWOODLOGGING.CO.UK



Woodland Play Centre presents

Festive Family Fun

Saturday 16th December 2017
2.30pm - 5.00pm
The Woodland Play Centre
Crowcombe Heathfield,
near Taunton, Somerset.

Join us in the woods to get into the festive spirit.

Make festive decorations to take home
Explore the winter woods and
Keep warm with hot drinks available

£20 per family (family of 4)
£6 per child / £4 per adult.

Limited number of tickets
Bookings must be in advance.
Directions sent on booking.

Visit
www.woodlandplaycentre.co.uk
for information



Business Unit to Rent – Crowcombe

Suitable for Workshop, Offices or Storage

Super fast Broadband, 3 Phase Electricity & 4G Mobile available

Short or Long term lets.

Size up to 900Sq/ft

Contact Bob Druitt 07831-172718

HALSWAY

MANOR

National Centre for Folk Arts

Enjoy, explore and learn about the folk arts through our year-round programme of courses, events and activities for all ages and abilities.

Workshops
Live music
Dancing
Choir
Singing
Young Folk
Maypole
Storytelling
Instrument making
Craft
and more...



www.halswaymanor.org.uk
01984 618274





• J & J Catering •

JnJCatering.co.uk

Offering catering for all occasions in Somerset

* Weddings * Anniversaries * Special occasions *
Funerals * Agricultural events

We offer flexibility to tailor our services to suit
your needs and budget.



For more information please contact:

Charley Long

jjcatering@outlook.com

01984656861 / 07590846727

Brewers Water Farm, Crowcombe, Taunton, TA4 4BH



FREE TRIAL CLASS!

**EXPERT DANCE,
FITNESS AND
ACROBATIC
TUITION AT
CROWCOMBE.**

**SOSA SALSA FITNESS
PRE & PRIMARY BALLET
GRADE 1 BALLET
JUNIOR STREET DANCE
ACROBATIC ARTS - GYMNASTICS**

WWW.DANCEMORE.ORG.UK



QUANTOCK HILLS APARTMENTS



SOUTH WING, CROWCOMBE COURT

The South Wing of Crowcombe Court has two comfortable and well appointed ground floor apartments available as holiday lets.

Each apartment has 3 bedrooms (sleeping 5 guests), an open plan living area and access to the communal orchard garden

www.quantockhillsapartments.co.uk

admin@crowcombecourt.co.uk • 01984 618752

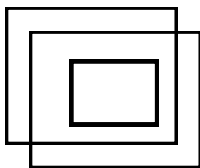
Ian D LEE

CARPENTER

Local, experienced and reliable

All aspects of carpentry and general building

- Structural Timber Work
- Locks latches and catches
- Solid Timber Flooring
- Cellar and Basement Conversions
- Doors & Windows
- Kitchens & Bedrooms
- Property Refurbishment
- City & Guilds Qualified



Anything undertaken

Please call **ian** for free quote on

Home: 01984 618795

Mobile: 07984 671912

Or email ian@iandlee.co.uk

***Selling Your House?
Moving Home/Office?
Need somewhere to put your furniture,
or just clear some space?***



150 Priorswood Road,

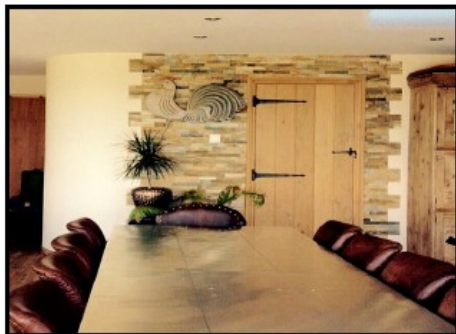
Taunton, TA2 8DU

01823 323575

www.beehiveselfstorage.co.uk

Taunton PLASTERING AND BUILDING SERVICES

FOR YOUR FREE QUOTATION CALL RAY ON: 07889 435693
OR EMAIL US AT: INFO@TAUNTONPLASTERING.CO.UK



Domestic and Commercial Work
All Aspects of Plastering
Artex Ceilings
Removal of Artex Ceilings
Lime Plastering and Restoration Work
Rendering and Screeding
Building Extensions
Swimming Pools
Damp Proofing (guaranteed work)
Tiling
Project Management
General Building and Maintenance
Consultancy Service
Insurance Quotations
Painting and Decorating

WWW.TAUNTONPLASTERING.CO.UK

COOK

www.cookfood.net

Delicious frozen meals that look and taste
homemade. Free Delivery with a minimum spend
of £30. Order online or call
01823 323001

Alternatively, Astrid and Chris would love to see
you in their shop on Corporation street
in Taunton



At **Red Deer Country** we combine the best of both the traditional 'high street' agency service and a cost effective online service.

- ❖ Great online exposure
- ❖ Local knowledge and expertise
- ❖ Highly competitive pricing

Email: info@reddeercountry.co.uk

Sales: 01984 631153

Lettings: 01984 634579



www.reddeercountry.co.uk

West Somerset Advice Bureau



Free confidential advice on:

- ◆ Welfare benefits ◆ Debt
- ◆ Housing problems ◆ Employment
- ◆ Consumer issues
- ◆ Divorce and family matters

Contact West Somerset Advice Bureau

The Lane Centre, Market House Lane, Minehead TA24 5NW

Tel: 01643 704624

Email: enquiries@westsomersetadvice.org.uk

www.westsomersetadvice.org.uk

Opening hours on: Monday, Tuesday, Thursday and Friday 10am - 3pm

Wednesday 10am - 1pm (closed first Wednesday of the month)

Telephone Advice Service: same as opening hours above.

Also at:

Watchet Surgery, Thursday 10am –12noon

Williton DoctorsSurgery Wednesday 10am - 12noon

Exmoor Medical Centre, Dulverton Tuesday 10am-12noon



Terry James

Bathroom, Wetroom & Kitchen Installations

No-Obligation Quotes

Bespoke Design & Installation

Supply & Fit or Fit Only Service

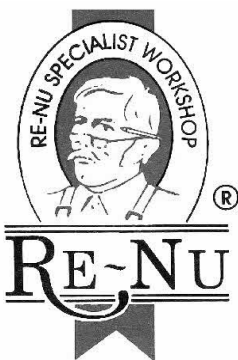
Call Terry on

07905 467778

www.terry-james.co.uk



WANT A NEW KITCHEN?



RE-NU make doors and drawer-fronts **any size**, which we fit onto your existing kitchen cupboards and bedroom wardrobes.

We also fit new worktops, extra cupboards, sinks and appliances.

Complete kitchens also supplied and fitted

LESS TIME, DISTURBANCE AND COST

Telephone: Jem Foster on 01823 401332

www.jem@re-nukitchens.co.uk



*Home Leigh House
Crowcombe
Somerset
TA4 4BL*

*Bed & Breakfast
En-suite Accommodation*

Price from £28.00 pppn

*Mrs Kim Hughes
Tel: 01984 618439*



WINDOW & DOOR DOCTORS

Window & Door Repair Service

**Steamy Windows & Draughts
Hinges, Handles, Locks & Seals
UPVC, Wood & Aluminium**

FREE ESTIMATES

07967 314 323

CONTACTS

100+ CLUB		01984 618437
CAREW ARMS		01984 618631
CAREW RANGERS FOOTBALL		01984 618281
CHURCH FLOWERS		01984 618654
CHURCH HOUSE BOOKINGS		01984 631793
CHURCH SECRETARY		01984 618715
CONSERVATIVES - WEST QUANTOCKS BRANCH		01984 618752
CROWCOMBE BABY & TODDLER GROUP		01984 618350
	katyemmadavis@googlemail.com	
CROWCOMBE BELLRINGERS		01984 618715
CROWCOMBE BOOK CLUB		01984 618287
CROWCOMBE CRICKET CLUB		01984 618670
CROWCOMBE CARS		01984 618263
CROWCOMBE COURT OFFICE		01984 618752
CROWCOMBE KARATE CLUB		07914 411980
	Mizuchiwadokai@gmail.com	
CROWCOMBE & STOGUMBER PRIMARY SCHOOLS		01984 618273
office@crowcombe.somerset.sch.uk / crowcombeandstogumberprimaryschools.co.uk		
CROWCOMBE HALL	crowcombehall@hotmail.com	01984 618254
CROWCOMBE PLAYERS		01984 618624
CROWCOMBE PRESCHOOL	crowcombepre-school@hotmail.co.uk	07790 231003
DISTRICT COUNCILLOR;— ANTHONY TROLLOPE-BELLEW		07977 591940
	ATrollope-Bellew@westsomerset.gov.uk	
FILM NIGHTS		01984 656720
FLOWER SHOW		01984 618249
MAGAZINE EDITOR		01984 631793
NEIGHBOURHOOD WATCH: VILLAGE HALL END		01984 618333
NEIGHBOURHOOD WATCH: MIDDLE		01984 618380
NEIGHBOURHOOD WATCH: SCHOOL END		01984 618738
NEIGHBOURHOOD WATCH—CROWCOMBE HEATHFIELD		01984 618215
PARISH COUNCIL CLERK	Claire Morrison-Jones	01823 601495
POST OFFICE		01984 618471
RURAL DEAN	flenbenley@btinternet.com	01984 633568
SCOTTISH COUNTRY DANCING		01984 618654
SHORT MAT BOWLS		01984 618444
SOUP KITCHEN		01984 618289
TENNIS CLUB		01984 618727/01984 618738
VILLAGE SHOP		01984 618452
WI		01984 618715/01984 618249
WOODLAND PLAY CENTRE		07775941353
	info@woodlandplaycentre.com / www.woodlandplaycentre.com	
YOGA	beccyjh@yahoo.co.uk	01984 618237